



(Above) Bales ready for shipment .
 The MRF bales newsprint, magazines, mixed office paper, PETE, natural and colored HDPE, tin and aluminum cans, and cardboard in bales ranging from 1,200 lbs. to 2,100 lbs. in weight.
 (Below) Pictured are some of the shipping docks at the new recycling facility, the docks are used for inbound and outbound materials. There are 9 shipping docks on the south side of the building. On the east side of the building there are 5 overhead doors which allow trucks to back in the building to unload to help control litter on the site.



Recycling program status :
Personnel: There are currently 18 full time employees in recycling, there is also a work crew from the Pre-Release center. **Equipment:** The county operates 2 curbside collection trucks, 1 commercial tote collection truck, 4 roll off trucks, with approximately 150 containers, 3 truck tractors and 30 trailers.

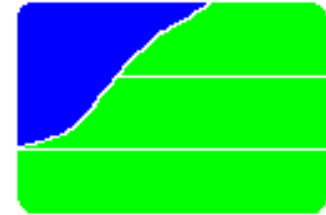
Collection programs :
Curbside collection bi-weekly in 13 Municipalities.
Commercial tote collection: 500 - 65 gallon totes at over 100 establishments.

Drop off collection: 25 drop off sites throughout Lycoming County.
Industrial : 48 and 53 foot trailers at local industrial sites for cardboard and office paper.

There were 12,530 tons processed and shipped out of the recycling facility, plus an additional 5,418 tons of wood were ground and shipped in 2007.

Lycoming County
RESOURCE MANAGEMENT SERVICES
 447 Alexander Drive
 Montgomery ,Pa 17752
 Phone: 800-326-9571
 Fax: 570-547-6603
LCRMS RECYCLING HOTLINE
 1-800-736-7559
www.lcrms.com

LYCOMING COUNTY RESOURCE MANAGEMENT SERVICES



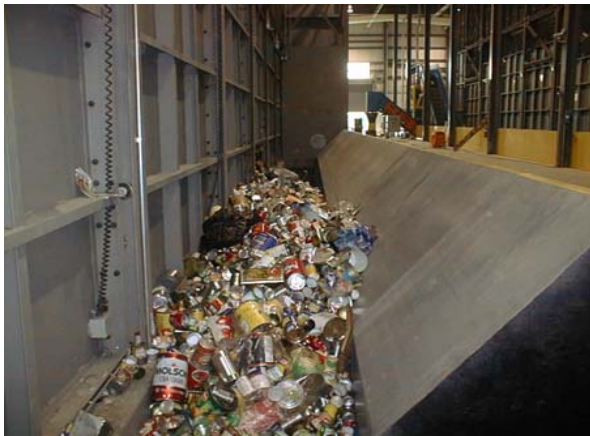
REGIONAL RECYCLING FACILITY



During October of 2003, LCRMS opened a new 60,000 square foot recycling facility to handle the 45 to 50 tons per day of materials received for processing.



(Above) One of the county's recycling trucks dumps in a bin on the tipping floor, all incoming material is stored in bins until it is fed onto a conveyor belt and sent up to the sorting room where the material is sorted and dropped into bins below. Once the material is sorted it is loaded onto another belt which feeds the Nexgen two-ram baler.

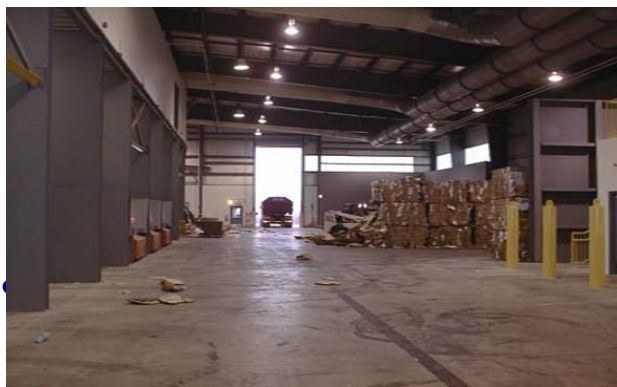


Steel cans are moving along a conveyor belt on their way up to the sorting room for processing. After the cans are sorted they will be stored in a bin under the sort line until they are fed on the baler feed conveyor and baled into bales weighing around 1800 lbs.

(Below) The sorting room is where all the material is sorted . Some of the material is dropped down the chutes and the others is moved into bins below by a series of conveyors. There is a separate conveyor to move the unacceptable material to a bin outside the building for disposal.



(Below) The cardboard processing area of the building. Here all of the cardboard is sorted and the clean material is baled in a single ram baler making around a 2000 lb. bale. The county processes and ships approximately 66 tons of cardboard a week.



Lycoming County collects recycling at drop off sites and on curbside routes. The County currently collects materials in thirteen towns and cities on a biweekly basis and operates 25 drop off sites in Lycoming County. In addition , the Recycling division conducts commercial recycling and cooperates with other counties in the region to enhance recycling. Below is a picture of a curbside recycling truck used in Lycoming County.



Also pictured is one of the Counties 25 drop off sites, the sites collect a variety of materials, including three colors of glass, tin and aluminum cans, number 1 and 2 plastic bottles, newspapers, magazines, and cardboard.

